

Community safety and crime statistics

Accessing crime data for your area

Crime statistics are an important and helpful way to inform community safety. Aggregate and public data, via the Crime Statistics Agency, is the most accurate way to get information on crime in your local area.



www.crimestatistics.vic.gov.au

Who

The Crime Statistics Agency (CSA) is an independent organisation responsible for processing and analysing Victorian crime data and making it public.

Why

It is a place for the general public and community organisations to get accurate and independent crime statistics.

Statistics by LGA and postcode

To see what is going on within your local government area, postcode or suburb, you can access the interactive "Latest crime data by area" tools at:

www.crimestatistics.vic.gov.au/crime-statistics/latest-crime-data-by-area

Data is available for the past 10 years. The first two tools present data by LGA visually, as infographics and a map. You can download the data visualisations as an image or PDF.

The third tool includes postcode & suburb data and is presented as a table. You can view statistics for your area by offence division and subdivision, or drill down even further to view by offence subgroup.

The step-by-step guides on the next 2 pages show how to access specific data for you LGA, postcode and suburb.

The screenshot shows a table titled "Incidents and rate per 100,000 population by principal offence and local area". The table has columns for "Offence Subdivision" and "Year ending December" (2011-2018). The data is as follows:

Offence Subdivision	2011	2012	2013	2014	2015	2016	2017	2018	2019
A12 Homicide and related off.	7	13	5	8	11	6	13	13	13
A20 Assault and related off.	657	771	885	856	956	1,117	1,278	1,172	1,400
A30 Sexual offences	116	95	119	129	104	155	222	236	211
A40 Abduction and related off.	13	11	12	13	16	12	3	9	11
A50 Kidnapping	59	55	77	69	88	113	137	129	117
A60 Blackmail and extortion	2	2	5	5	3	7	5	2	2
A70 Stalking, harassment and	57	89	115	137	183	205	196	208	211
A80 Dangerous and negligent	58	62	90	90	127	129	129	152	131
Total	969	1,087	1,308	1,314	1,488	1,748	1,967	1,910	2,221
B23 Arson	83	88	112	100	109	141	90	85	111
B20 Property damage	1,308	1,331	1,151	1,104	966	977	967	875	1,110
B30 Burglary/Break and enter	1,396	2,074	1,403	1,562	1,845	1,819	1,419	1,999	1,271
B40 Theft	4,257	6,028	4,342	4,179	4,643	4,888	3,456	4,212	5,221

When

Crime statistics are released quarterly, in March, June, September and December. Release dates can be found on the CSA website.



Accessing crime statistics for your Local Government Area

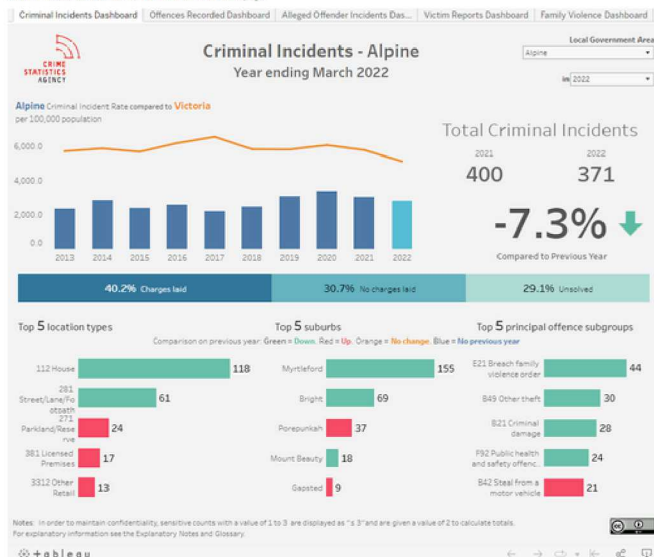
Go to Latest crime data by area on the Crime Statistics Agency website at www.crimestatistics.vic.gov.au/crime-statistics/latest-crime-data-by-area

Step 1:

Here you will see a section called "Crime by area data visualisation" which presents key crime figures for each LGA as an infographic.

Crime by Area - Data Visualisation

Data for Victoria are available on the [latest crime data webpage](#).



Step 2:

Choose which statistical dashboard you wish to look at. There are 5 dashboards you can navigate between:

- Criminal incidents
- Offences recorded
- Alleged offender incidents
- Victim reports
- Family violence.

Crime by Area - Data Visualisation

Data for Victoria are available on the [latest crime data webpage](#).



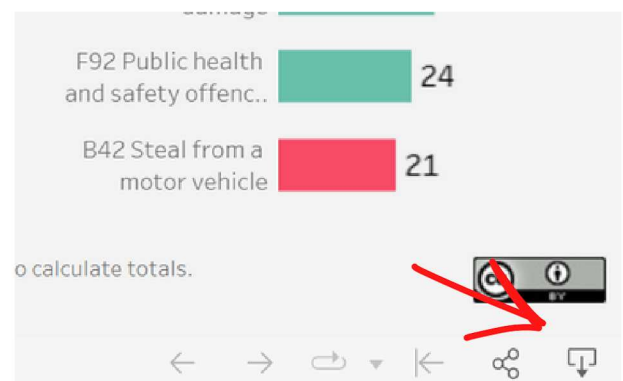
Step 3:

Now select your LGA, and the year you wish to view statistics for, from the drop-down boxes in the top right.



Step 4:

You can download each dashboard for your LGA as an image or PDF by clicking on the download icon in the bottom right corner.



Accessing crime statistics for your postcode, suburb or town



Go to Latest crime data by area on the Crime Statistics Agency website at www.crimestatistics.vic.gov.au/crime-statistics/latest-crime-data-by-area

Step 1:

Scroll down to the "Crime by area - tabular visualisation" section (past the data visualisation and map sections).

Crime by Area - Tabular Visualisation

Data for Victoria are available on the [latest crime data](#) webpage. Downloadable excel files are available on the [Download data](#) webpage.

Download data

Contents | Criminal Incidents | Offences Recorded | Alleged Offender Incidents | Victim Reports | Family Incidents

Crime by Local Government Area

Please select the population of interest below:

Criminal Incidents

A criminal incident is a criminal event that may include multiple offences, alleged offenders and/or victims, is recorded on the LEAP database on a single date and occurred at one location.

Offences Recorded

An offence is counted and included in the data where it was reported to Victoria Police and first recorded in LEAP within the reference period.

Alleged Offender Incidents

An alleged offender incident is an incident involving one or more offences to which an individual or organisation has been linked as an alleged offender. This alleged offender may have multiple incidents within the reference period.

Victim Reports

A victim report is counted when an individual or organisation reports to Victoria Police that they have been a victim of one or more criminal offences. This victim can be counted more than once within the reference period, if they have made more than one separate report to Victoria Police.

Family Incidents

A family incident is an incident attended by Victoria Police where a Risk Assessment and Risk Management Report (also known as an L17 form) was completed.

Step 3:

Select the postcode and suburb/town tab from the grey menu bar.

Crime by Area - Tabular Visualisation

Data for Victoria are available on the [latest crime data](#) webpage. Downloadable excel files are available on the [Download data](#) webpage.

Download data

Contents | Criminal Incidents | Offences Recorded | Alleged Offender Incidents | Victim Reports | Family Incidents

Offences Recorded

Offences Recorded and Rate per 100,000 | Offence Type | **Postcode and Suburb/Town** | Location Type | Investigation Status | Police Service Area - Offence Type

Offences recorded by offence type, local government area and postcode or suburb/town

Select a Local Government Area, Postcode or Suburb/Town Name of interest from the following dropdown filters.

Local Government Area

Step 4:

Now select the LGA, postcode and suburb/town you're after from the drop-down boxes in the top right corner.

Type | Investigation Status | Police Service Area - Offence Type

OR Select a **Local Government Area, Postcode or Suburb/Town Name** of interest from the following dropdown filters.

Local Government Area

(All)

and the **Postcode** (All) and **Suburb/Town Name** (All)

You will now see offences recorded for your chosen location by offence division and subdivision.

Step 5:

You can drill down further to see statistics for each offence subgroup. Click on the tiny plus ("+") sign under the red "Offence subdivision" column heading and it will expand to show the offence subgroups.

Offences Recorded

Offences Recorded and Rate per 100,000 | Offence Type | **Postcode and Suburb/Town** | Location Type | Investigation Status | Police Service Area - Offence Type

Offences recorded by offence type, local government area and postcode or suburb/town

Select a Local Government Area, Postcode or Suburb/Town Name of interest from the following dropdown filters.

Local Government Area: Eastarng

Suburb/Town Name: Eastarng Centre

Offence Division: 820 Arson

Offence Subdivision: 820 Arson

Offence Subgroup: 820 Arson

Offence Division	Offence Subdivision	Offence Subgroup	2013	2014	2015	2016	2017	2018	2019	2020	2021	2022	
8 Property and deception offences	820 Arson	811 Cause damage by f...	1	16									
		812 Cause a bushfire	1										
		819 Other fire-related											
		820 Property damage	246	246	165	130	105	128					
		822 Graffiti	54										
		829 Other property da...											
		830 Burglary/Break and enter	831 Residential aggr...										
			832 Non-residential a...										
			833 Unknow aggravi...										
			831 Residential non-a...	40	59	37	51	35	48	36	32	33	39
			832 Non-residential n...	74	65	46	70	65	51	37	25	21	31
			839 Unknow non-ag...	2	3	3	2	2					

Step 2:

Click on the "offences recorded" button from the areas of interest.

Crime by Local Government Area

Please select the population of interest below:

Criminal Incidents

A criminal incident is a criminal event that may include multiple offences, alleged offenders and/or victims, is recorded on the LEAP database on a single date and occurred at one location.

Offences Recorded

An offence is counted and included in the data where it was reported to Victoria Police and first recorded in LEAP within the reference period.

A table like this will appear, showing results for the past 10 years

Crime by Area - Tabular Visualisation

Data for Victoria are available on the [latest crime data](#) webpage. Downloadable excel files are available on the [Download data](#) webpage.

Download data

Contents | Criminal Incidents | Offences Recorded | Alleged Offender Incidents | Victim Reports | Family Incidents

Offences Recorded

Offences Recorded and Rate per 100,000 | Offence Type | Postcode and Suburb/Town | Location Type | Investigation Status | Police Service Area - Offence Type

Offences recorded and rate per 100,000 population by police region and local government area

Select Offences recorded or Rate per 100,000 population from the dropdown filter below.

Offences recorded

To view notes about the data presented, hover over the ⓘ symbol.

Police Region	Local Government Area	2013	2014	2015	2016	2017	2018	2019	2020	2021	2022
1 North West Metro	Banyule	7,286	9,962	8,769	9,923	9,703	9,558	9,208	9,959	8,762	7,191
	Brimbank	18,643	19,426	17,428	18,312	18,914	17,625	18,196	20,140	19,082	16,839
2 Eastern	Darebin	11,061	13,235	14,319	15,916	16,746	14,760	14,843	15,121	15,003	12,424
	Hobsons Bay	6,927	6,788	6,805	7,126	6,418	6,012	6,316	6,081	5,846	5,884
3 Melbourne	Hume	15,350	16,246	18,137	21,765	22,311	20,499	21,172	21,591	21,031	17,870
	Mareebyong	8,620	8,633	7,921	9,035	9,196	8,093	8,188	9,379	8,852	8,703
4 South East	Melbourne	33,761	32,576	33,707	35,452	37,515	36,659	35,626	36,359	35,712	34,479
	Melton	8,426	9,330	9,901	11,818	11,626	10,443	11,061	13,054	13,993	12,103
5 Western	Moonee Valley	8,267	7,947	8,881	9,408	9,772	8,759	8,090	6,899	7,873	7,860
	Morwell	11,674	12,581	12,846	14,089	14,384	13,351	14,598	14,439	12,844	11,526
6 South West	Warrnambool	1,919	2,124	2,155	3,379	2,883	2,268	2,083	2,291	2,147	2,156
	Whittlesea	12,267	13,392	13,272	14,616	16,424	15,360	16,049	16,675	16,019	12,510